

Pioneering for You

HVAC OEM Competence Centre

Stratos PARA **/1-9

Datasheet



ErP
READY

APPLIES TO
EUROPEAN
DIRECTIVE
FOR ENERGY
RELATED
PRODUCTS

Stratos PARA **/1-9



Field of application



Heating/ Geothermal/ Solar

Stratos PARA 15/1-9 T1

Stratos PARA

Electronically controlled High Efficiency pump

15

Threaded connection DN 15 (20; 25; 30: also available)

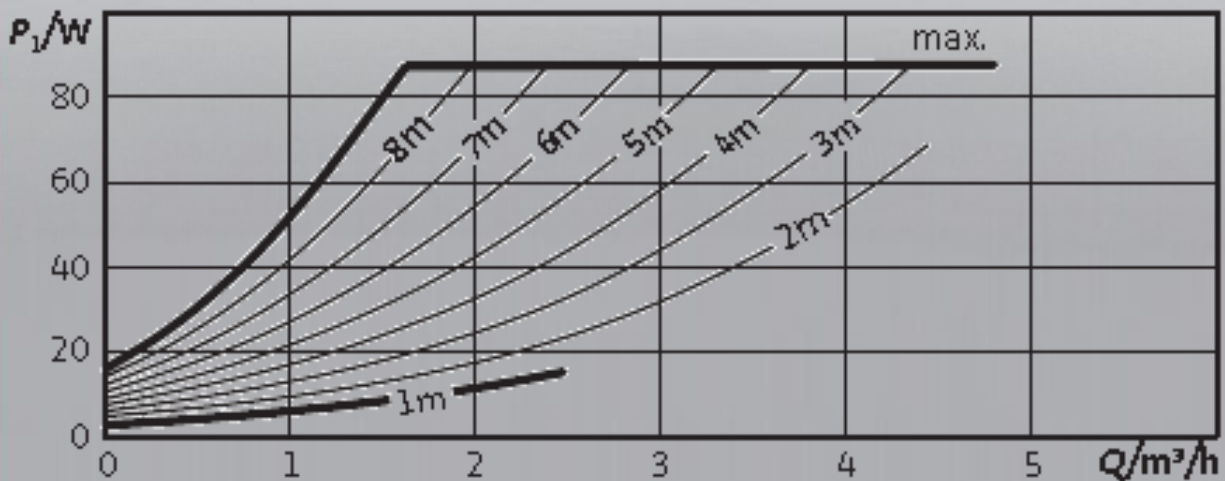
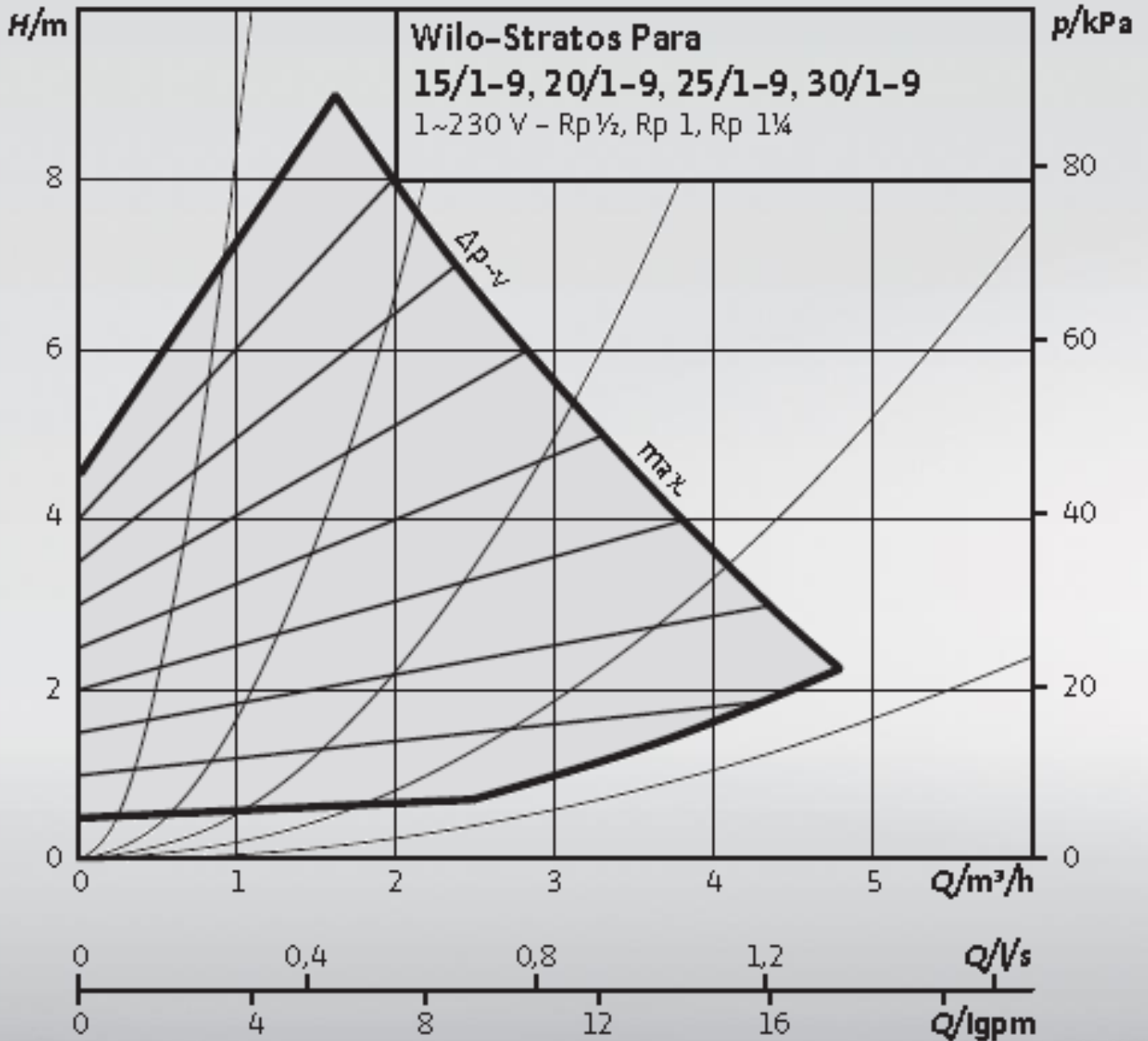
1-9

1-9 = delivery head in [m] at $Q = 0 \text{ m}^3/\text{h}$

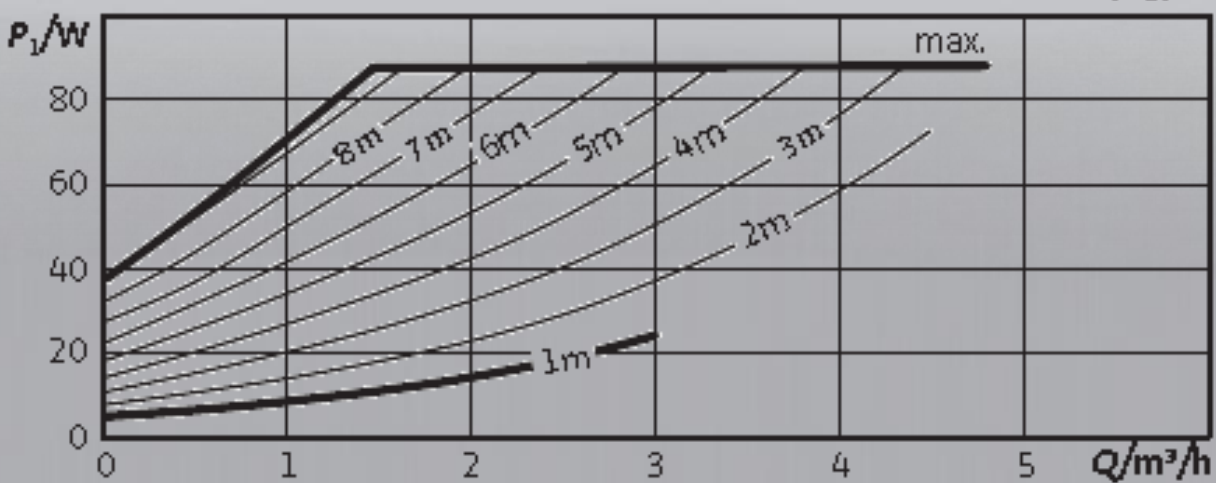
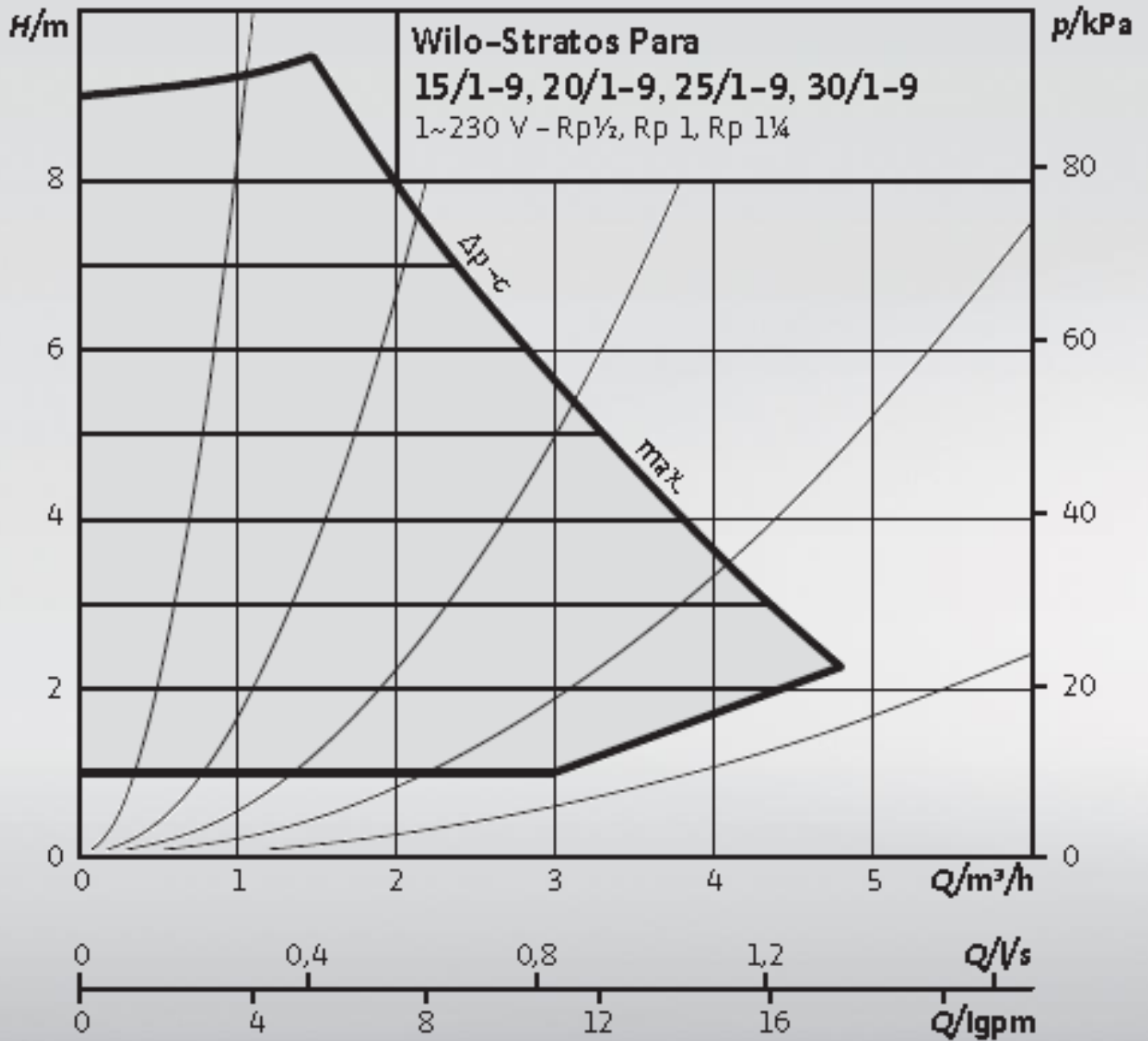
T1

The pump is controlled by Red Knob technology
 ΔP -v, for variable differential pressure
 ΔP -c, for constant differential pressure
 Control input "Analog in 0 ... 10V" with cable breake detection
 Collective fault signal SSM

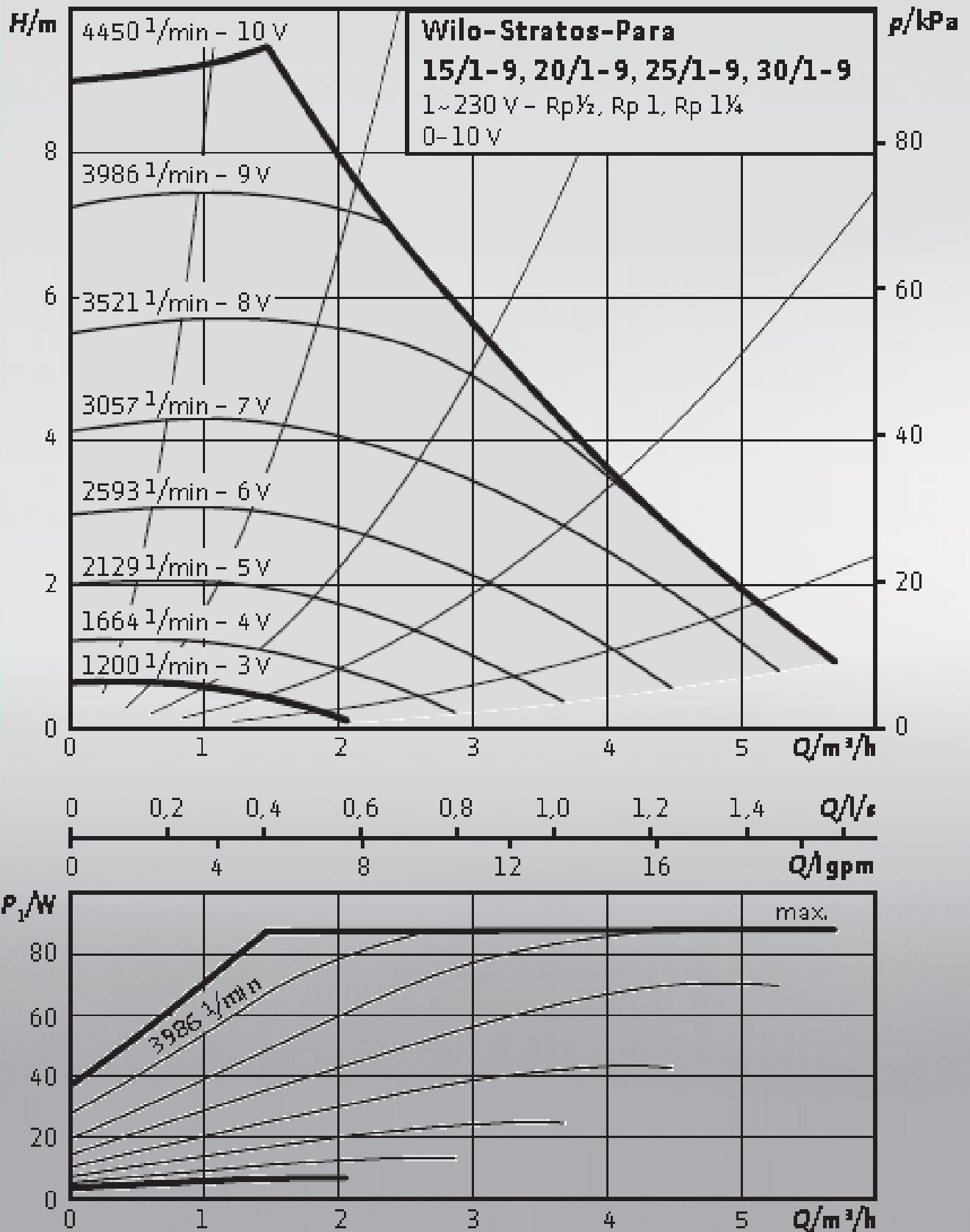
Hydraulic operational $\Delta p-v$ (variable)



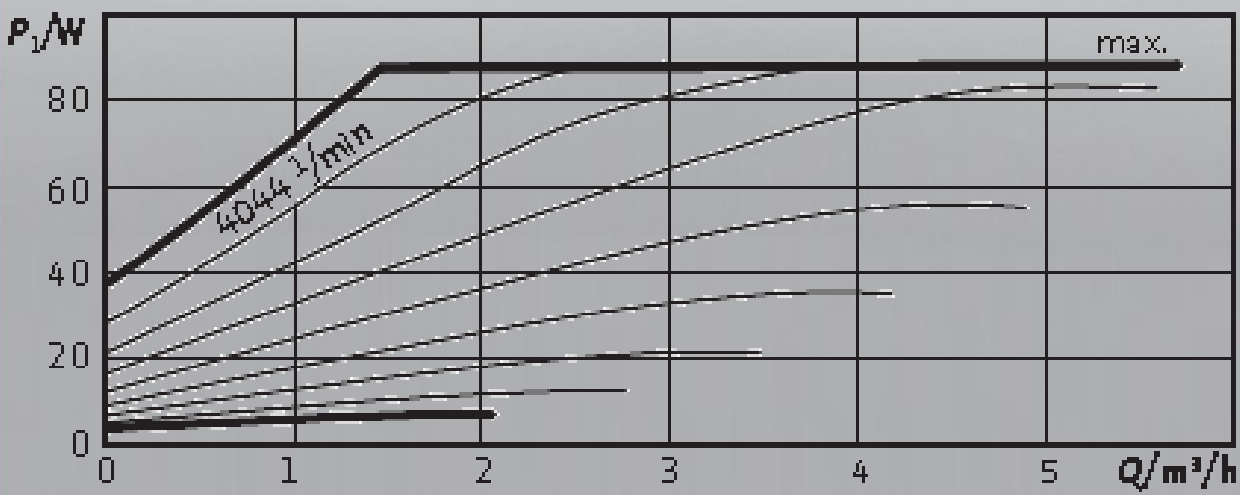
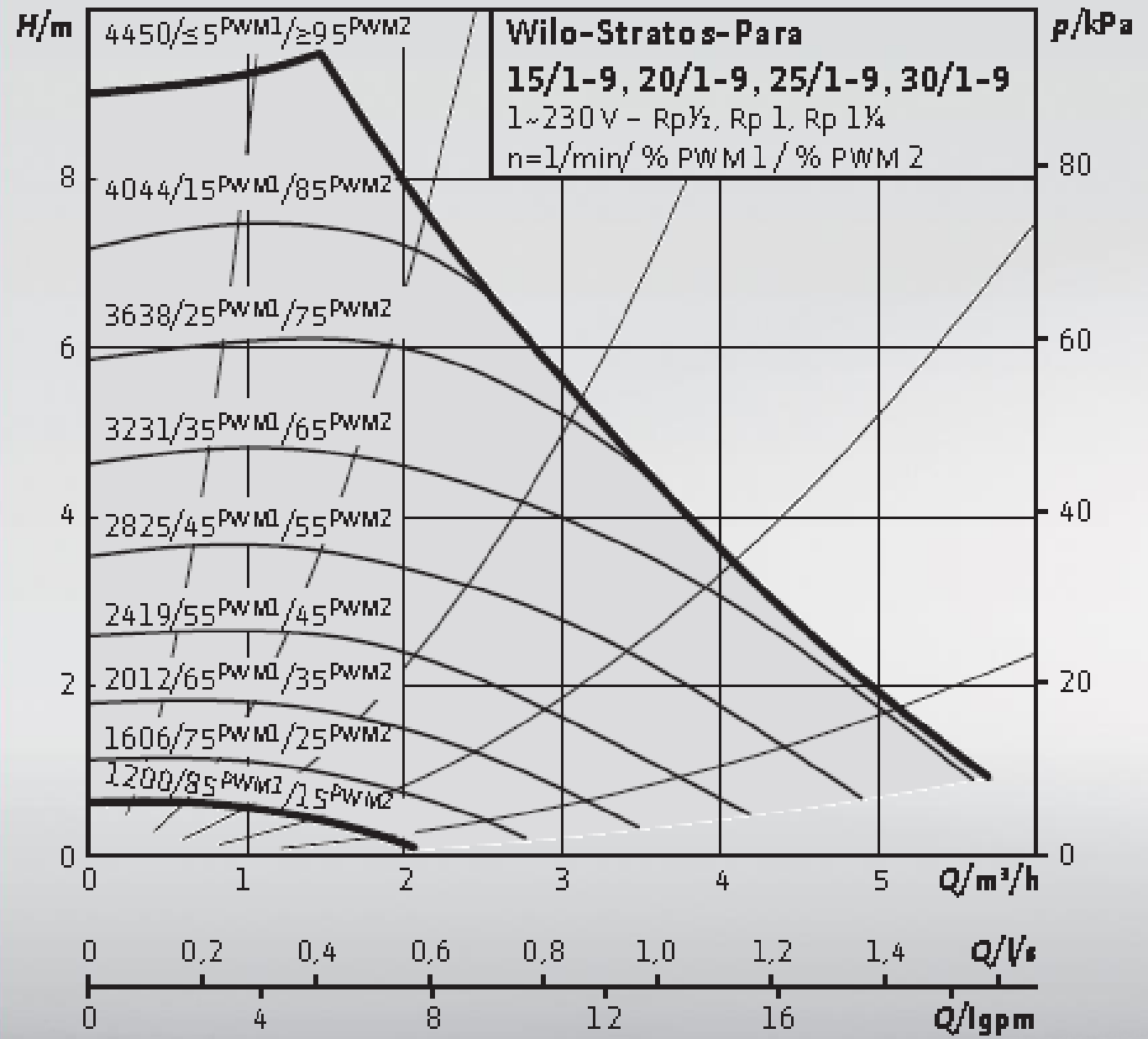
Hydraulic operational Δp -c (constant)



Hydraulic operational area external control Analog-in 0-10V



Hydraulic operational area external control PWM



Electrical connections

wilo

Mains cable

Standard 1,5 m with end splices

Optional 2,2 m with end splices

3,2 m with end splices

According to customer specification

Mains and 2-core control cable

Standard 1,5 m with end splices

Optional According to customer specification

Mains and 4-core control cable

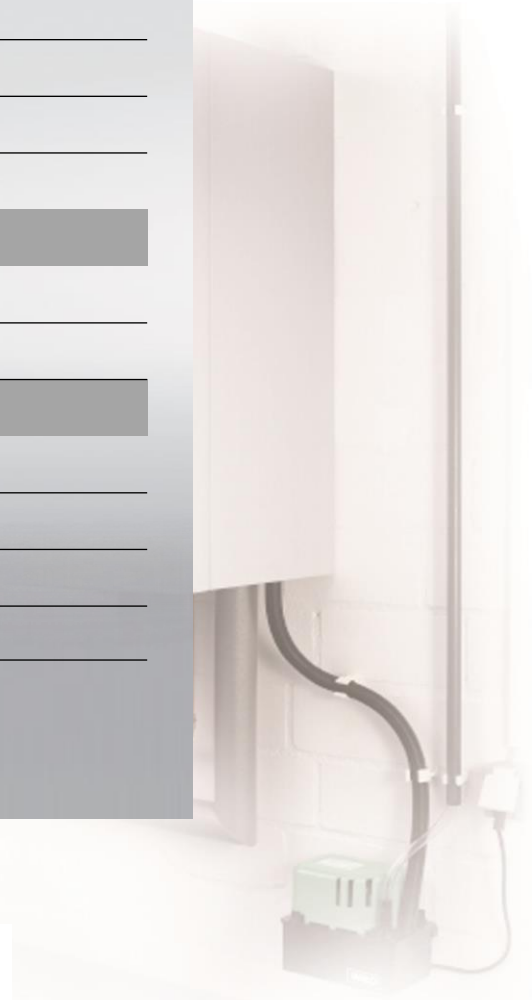
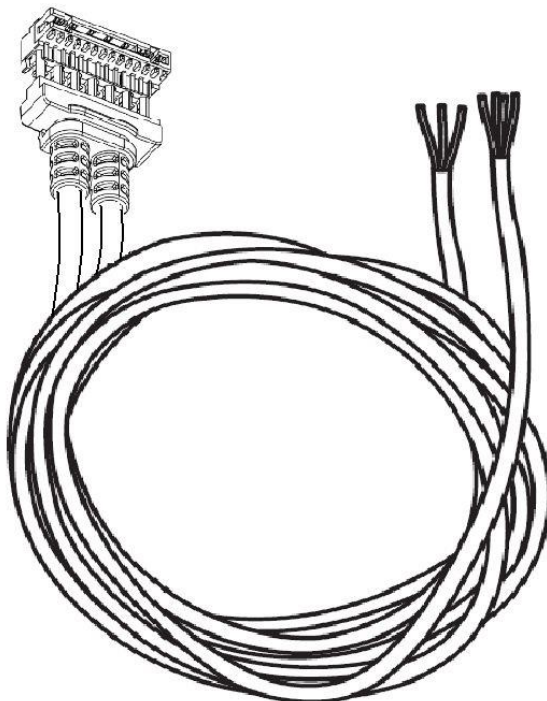
Standard 1,5 m with end splices

Optional 2,2 m with end splices

3,2 m with end splices

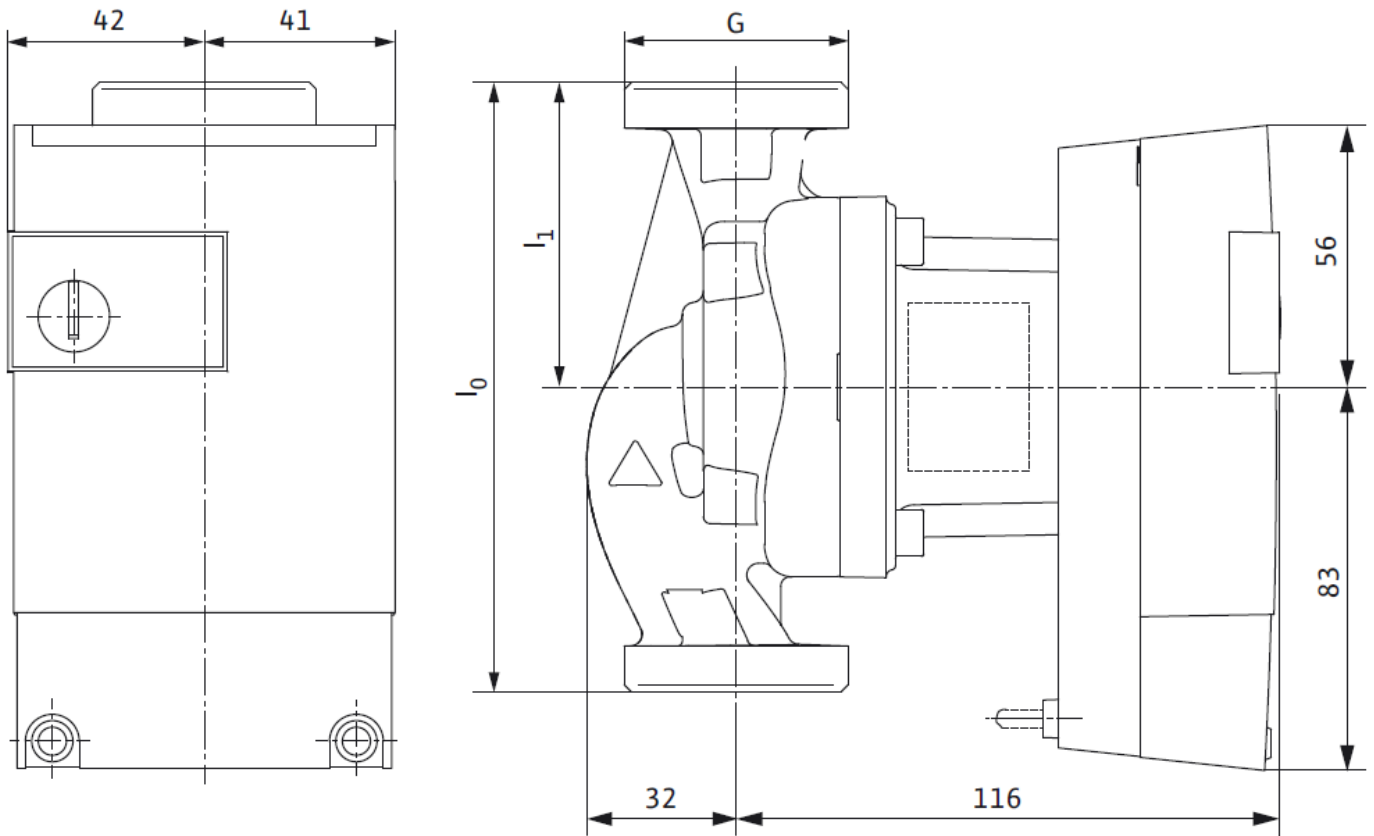
According to customer specification

Standard mains and control cable with end splices





Dimensions



Stratos PARA	Thread	Threaded pipe union	Overall length (mm)	Dimensions (mm)
	-	-	l_0	l_1
15/1-9	G1"	Rp 1/2"	130	65
20/1-9	G1 1/4"	Rp 3/4"	130	65
25/1-9	G1 1/2"	Rp 1"	180	90
25/1-9	G1 1/2"	Rp 1"	130	65
30/1-9	G2"	Rp 1 1/4"	180	90
30/1-9	G2"	Rp 1 1/4"	130	65

Approved fluids (other fluids on request)	Heating water (in accordance with VDI 2035) Water-glycol mixtures (max. 1:1; above 20% admixture, the pumping data must be checked)
--	---

Power

Energy Efficiency Index (EEI)	≤ 0,23
Max. delivery head	9 m
Max. volume flow	5 m ³ /h

Permitted field of application

Temperature range for applications in HVAC systems at max. ambient temperature. Limit values for continuous operation at maximum rated power	Of 25°C = -10 to 95°C Of 40°C = -10 to 95°C Of 45°C = -10 to 95°C Of 50°C = -10 to 90°C Of 55°C = -10 to 80°C Of 60°C = -10 to 70°C Of 65°C = -10 to 60°C
Maximum static pressure	PN 10

Electrical connection

Mains connection	1~230 V +10%/-15%, 50/60 Hz (IEC 60038 standard voltage)
------------------	--

Motor/electronics

EC Machinery directive	2006/42/EG Conform
Electromagnetic compatibility	Directive 2004/108/EG
Emitted interference	EN 61000-6-3
Interference resistance	EN 61000-6-2
Protection class	IPx4D
Insulation class	F
RoHS / REACH	Not submitted

Minimum suction head at suction port to avoid cavitation at water pumping temperature

Minimum suction head at 50/95°C	0.5 / 4.5m
---------------------------------	------------

Motor data

Stratos PARA	Speed	Power consumption 1-230 V	Current at 1-230 V	Motor protection
	n	P1	I	-
	rpm	W	A	-
1 - 9	1200 - 4500	3,5 - 90	0.05 - 0.70	Integrated

Materials

Stratos PARA	Pump housing	Impeller	Pump shaft	Bearing
1 - 9	Grey cast iron (EN-GJL-200)	PP composite with GF 50%	Stainless steel (X30Cr13)	Carbon, metal impregnated

wilo

WILO
HVAC OEM Competence Centre

50 av. Casella
18700 - Aubigny sur Nère
France
T +33 2 48 81 62 62
information@wilointec.com
www.wilointec.com

Pioneering for You